

# OVERVIEW

# NV5

**NV5, Inc.** (NV5) is a nationwide, professional and technical consulting firm and is ranked 54th in the Engineering News Record listing of top 500 A/E design firms. The

northeast infrastructure team (*formerly The RBA Group*) is headquartered in Parsippany, NJ and has multiple offices in the northeast, including Trenton, NJ, New York, NY and Philadelphia, PA. We are a multidiscipline firm of professionals dedicated to designs that enhance quality of life. Core specialties include bicycle/pedestrian planning, recreational planning and design, landscape architecture and streetscape design, highway and traffic design, transportation planning, structural and bridge design, site design, utility design services, environmental permitting and processing services, hydraulics / hydrology and construction management. We have provided design services for various counties and municipalities throughout New Jersey, and other major transportation agencies including NJDOT, NJTA, NJTPA, NJ TRANSIT, PANY&NJ, DRJTBC, NYSDOT, NYCDOT, and NYCDCC.

**NV5** includes seasoned professionals, experienced in a broad range of transportation enhancement and transportation alternative settings. We are nationally and locally recognized, and active in organizations such as the Association of Pedestrian and Bicycle Professionals (APBP), American Society of Highway Engineers (ASHE), Institute of Transportation Engineers (ITE), New Jersey Chapter of the American Planning Association (APANJ), Association of New Jersey Environmental Commissions (ANJEC), New Jersey Main Street, and more.

## TRANSPORTATION ALTERNATIVES (TA)—NV5 RELATED SERVICES

*NV5 is a full service multidiscipline firm. Below are some specific TA services...*

### Complete Streets

- Policy Plans
- Implementation & Training
- Multimodal Design
- Transit Access
- Smart Streets (Technology/Infrastructure)

### Pedestrian Safety

- ADA Capability (Sidewalks, Intersection Devices)/Bump Outs
- Crosswalks (High Visibility, Colored/ Textured, In-pavement Lighting)
- Safe Routes to School
- Lighting
- Pedestrian Bridges/Tunnels
- Traffic Calming/Road Diets/Speed Tables
- Signals (HAWK, Flashing Beacons, etc.)

### Roadway Traffic Improvements

- Drainage Improvements
- Pavement Improvements
- Intersection/Signal Design/Traffic Regulation
- Parking Analysis
- MUTCD Signing / Striping
- Roadside Safety
- Environmental Services
- Utility Design

### Streetscape Design

- Decorative Street Furniture
- Art / Cultural Elements
- Wayfinding Signage
- Parklets
- Landscape (Green Infrastructure)

### Context Sensitive Design / Solutions

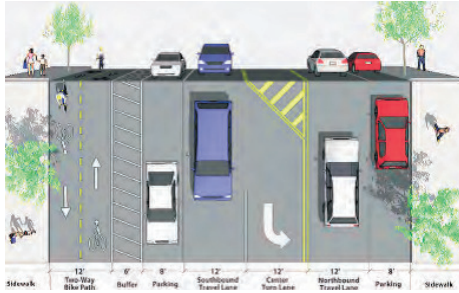
- Central Business District Enhancements
- Gateways/Decorative Treatments
- Pedestrian Plazas
- Cultural Resources
- Community Outreach
- Smart Growth

### Bicycle Accommodation (On Road / Off Road)

- Pavement Markings/Sharrows (shared lane markings)
- Dedicated Bike Lanes
- Parking / Racks
- Signing
- Trails & Greenways



# TRANSPORTATION ALTERNATIVES (TA)—RELATED EXPERIENCE



## NJDOT Bicycle & Pedestrian Local Planning Assistance

**Client: New Jersey Department of Transportation**

NV5 has served as a consultant to the NJ Department of Transportation's Bicycle and Pedestrian program for over sixteen years, providing technical planning and design assistance for numerous conceptual design and feasibility studies, municipal bicycle/pedestrian circulation plans, complete streets design guidance, safe routes to school plans, and pedestrian safety corridor plans.



## Complete Streets—Comprehensive Program Support Services

**Client: New Jersey Department of Transportation**

NV5 is at the forefront of planning and design firms applying a Complete Streets approach to transportation solutions. Key Complete Streets projects led by NV5 include outreach, training and implementation workshops, and local planning and design assistance.



## "Complete Street" Redesign of Washington Street in Hoboken, NJ

**Client: City of Hoboken**

NV5 collaborated with the City to define and advance this vision through the creation of a concept plan that addresses civic, safety, economic, and cultural goals as defined by the community, key stakeholders, and local advisory groups. This design process featured concept designs and solutions related to a range of issues, including pedestrian safety, multimodal transportation, parking, commercial loading, wayfinding, lighting, streetscape furnishing, green infrastructure, and smart technologies.



Upgraded Traffic Signals with Pedestrian Countdown Signal Heads



Curb Extensions



New & Refurbished Street Furniture, Lighting & Wayfinding



Skid-resistant, Retroreflective Crosswalks



Dedicated Bicycle Facilities & Parking



Commercial Loading Zones & Parking



"Portal" Style Bus Shelters



Green Elements & Infrastructure

Walking and bicycling are important to New Jersey because they:



NV5 Graphics & Input for the NJ Bicycle & Pedestrian Master Plan

Client: New Jersey Department of Transportation



# TRANSPORTATION ALTERNATIVES (TA)—RELATED EXPERIENCE

## EAST COAST GREENWAY NORTHEASTERN NEW JERSEY ROUTE LOCATION STUDY

**Client:** New Jersey Department of Transportation &  
East Coast Greenway Alliance

### East Coast



Greenway®

NV5 has collaborated with local communities, counties and state agencies for over a decade to achieve the design and construction of the East Coast Greenway trail system that traverses New Jersey as part of this overall 2600-mile trail, connecting cities from Maine to Florida.

## TRAFFIC ENGINEERING

**Clients:** Multiple

NV5 has full service traffic engineering expertise and routinely prepares studies and design plans for intersection and roadway upgrades for municipal and county clients including Montgomery Twp., Millburn Twp., Essex Co., Hudson Co., and Ocean Co. Projects involve transportation alternatives as well as ADA related sidewalk, parking, access and traffic signal upgrades. NV5 has prepared a number of Federally Funded local improvement projects and is well versed in the federal requirements placed on local agencies. We also serves as an on call traffic engineer to multiple municipalities and counties.



## Newark Greenway Network Project

**Client:** City of Newark, NJ

NV5 assisted the City of Newark with development of an interactive local outreach process to create conceptual plans and final landscape design plans addressing streetscape elements, appearance and identity, mobility and traffic, and navigation of wayfinding for this eight-mile corridor.

## NJDOT Environmental and Drainage, Hydrologic and Hydraulic (H&H) Task Order Contract Assignments (over 20 years)

**Client:** New Jersey Department of Transportation (NJDOT)

**Environmental** tasks include: technical studies and screenings, including air quality, ecology, hazardous waste, noise, socioeconomics/land use, cultural resources, as well as CEDs, EAs, EISs, Section 4(f) documents and EO-215 EISs. Services also include wetland delineations, environmental permitting and regulatory agency coordination (NJDEP, ACOE, SHPO and Green Acres). **Drainage/H&H** tasks include: stormwater collection and control facilities to address water quantity, quality and recharge (extended detention basins, infiltration/recharge basins, stormwater wetlands, wet ponds, bioretention basins, linear swales, MTDs, etc.), flood abatement and H&H services for bridge/culvert replacements (with T&E species crossing), scour analyses, stream stabilization and green infrastructure facilities.

## Port Authority Term Agreement, On-Call Traffic/Planning Assistance

**Client:** Port Authority of New York & New Jersey

NV5 has been providing various traffic planning and transportation engineering services as part of call-in contracts from 1991 to present. The various assignments have included data collection, traffic studies and analysis, crash investigations, traffic signal design, signing and striping, maintenance and protection of traffic, bicycle and pedestrian facilities design and development of traffic engineering details.

## Bridge Street Stockton Streetscape

**Client:** New Jersey Department of Transportation, Borough of Stockton

NV5 provided all landscape architecture and streetscape design services for this \$2 million project which is the connector roadway between the Route 29 Scenic Byway and Delaware River. Because Bridge Street crosses the D&R State Park and Canal, all design elements required approval from the NJ State Historic Preservation Office (SHPO). Streetscape improvements included: new blue stone curb and sidewalks, period lighting, street trees, ornamental plantings, bicycle trail crossing design and historic signage.

2010 Hunterdon County Planning and Design Award



# TRANSPORTATION ALTERNATIVES—NV5 RELATED EXPERIENCE

## NYS&W Bicycle & Pedestrian Path

**Client:** County of Morris

NV5 is currently nearing completion of Final Design services, having completed Planning and Conceptual Design efforts, for the proposed 4.8-mile shared-use path, located in Passaic and Morris counties that will serve as a transportation and recreation link for local residents, commuters and visitors. The northern 4.1 miles of the path will consist of a 10' wide paved section which will be located within the abandoned NYS&W Railroad ROW. The southern 0.7-mile section of the path will be located adjacent to, but outside of, railroad ROW and will consist of paved sections and boardwalk sections within environmentally sensitive areas. Connections from the path to local attractors and destinations will be provided, and include Pequannock Valley Park, Pequannock Town Hall, Mt. View Train Station and other local downtown services and residential neighborhoods. This project will provide: a safe, accessible, convenient bicycle/pedestrian facility for residents; intermodal connectivity to public transit (rail and bus); transportation choices for all types of users and improved multi-modal access to surrounding land uses and activity centers.



## Route 35 Reconstruction MP 4.0-9.0 (Super Storm Sandy Emergency Contract)

**Client:** New Jersey Department of Transportation

NV5 provided final design and construction support services for a 5-mile section of Route 35, involving pavement replacement, new corridor-wide drainage system (over 30 outfalls) and replacement/ upgrades to 19 signalized intersections, significant sidewalk improvements, enhanced crosswalks, bike lanes, parking improvements, and over 800 ADA-compliant curb ramp installations, which were constructed in accordance with NJDOT American Disabilities Act policies.



## Patriot's Path Footbridge

**Client:** Morris County Park Commission

NV5 provided engineering services for the construction of a footbridge spanning the Whippany River, connecting portions of bicycle/pedestrian trails through Morris County parklands.

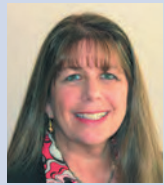
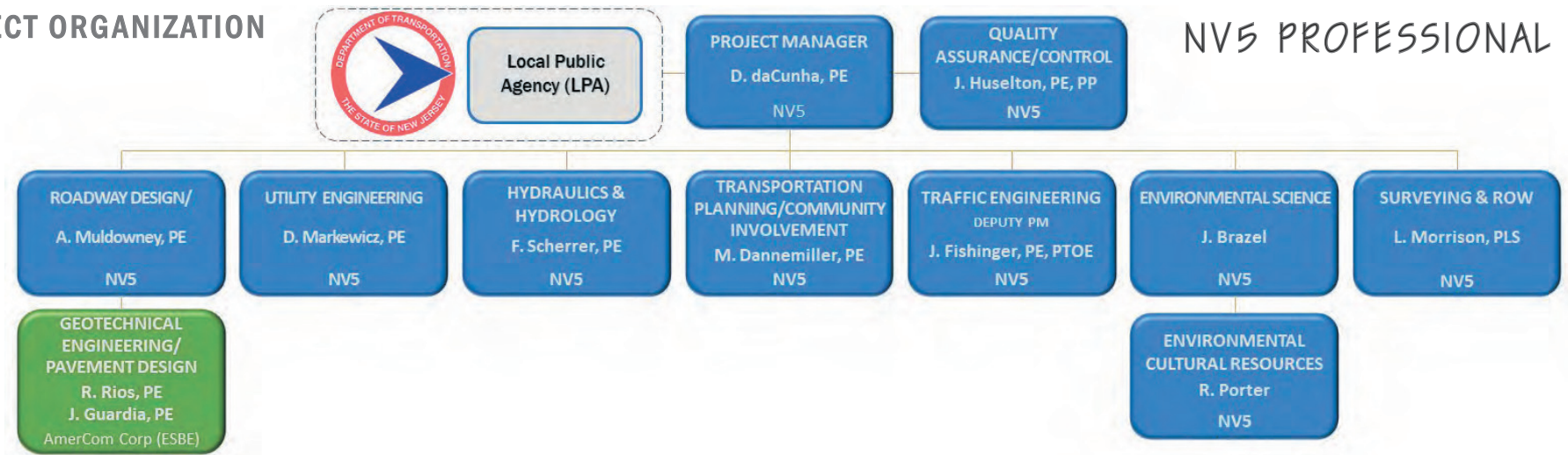
NV5 responsibilities included field survey, structural engineering, foundation design, soil erosion control permits and trail design for approximately 1500 feet of trail approaches.



# TRANSPORTATION ALTERNATIVES—RELATED QUALIFICATIONS

## PROJECT ORGANIZATION

## NV5 PROFESSIONAL STAFF



**Denice daCunha, PE—Project Manager**

Direct: 973.946.5624

Denice is a professional engineer with over 30 years of experience at NV5 in the design and management of numerous highway, bridge, and traffic engineering assignments. Her experience also includes managing NJDOT projects throughout all design phases: conceptual, preliminary, final design and construction support. Projects have included TE/TA type improvements involving pedestrian corridor safety, ADA compliance, signal upgrades, signing/stripping, streetscape, school zone safety, community outreach, etc. Several of Denice's projects have been recognized with awards from the American Planning Association, Engineers Council of NJ, NJ Concrete Association, Federal Highway Administration, and NJDOT Value Engineering.



**Michael Dannemiller, PE—Transportation Planning/Community Involvement**

Mike has been planning and designing bicycle and pedestrian projects for the last 26 years. He has developed plans and designs for enhancing bicycle and pedestrian accommodation from New England to Florida to Oregon. He has also developed and presented training sessions on Safe Routes to School and senior mobility, Complete Streets, traffic calming, bicycle and pedestrian planning and design. Mike is trained by the Federal Highway Administration for facilitating Safe Routes to School and Complete Streets workshops; and serves as an Advisor to the New Jersey East Coast Greenway Committee and the September 11th National Memorial Trail Alliance.

## PROFESSIONAL MEMBERSHIPS OF NV5 PERSONNEL INCLUDE:



## SUMMARY STATEMENT

We are well-equipped to develop multi-modal plans to create and enhance safe, walkable, Complete Streets that both enhance safety and promote a sense of place unique to each that will meet the needs of all transportation users and providers. Particularly relevant is our over 20 years of involvement with pedestrian, bicycle, traffic calming, urban design, context-sensitive design, and Complete Streets projects in New Jersey. In general, our recent development of statewide pedestrian, bicycle, school zone and safety guides, our local and national Complete Streets-related training qualifications, and our experience with transportation and land use projects in New Jersey, demonstrate our unique qualifications. Specific factors that enhance NV5's ability to accomplish the goals of Transportation Enhancement/Alternative assignments include:

- Our Key Staff Members provided assistance to the NJDOT in the development of NJ's top-ranked Complete Streets Policy and Implementation Program, and authored the NJ State Bicycle & Pedestrian Master Plan and NJDOT Pedestrian and Bicycle Safety Action Plans
- Our Key Staff Members served as NJDOT Training Course Instructors, and as instructors for the original NJTPA Walkable Community Workshops. Instructors are recognized nationally by the National Complete Streets Coalition and National Center for Safe Routes to School and have facilitated numerous workshops throughout the northeast