



## Building Better Communities by Design





# Congratulations on being selected for a Transportation Alternatives Program (TAP) Grant!

Having achieved this significant milestone, it is now time to select a consultant from the NJDOT pre-approved pool of design consultants to assist you with engineering design and/or project management services on your Transportation Enhancement (TE) or Transportation Alternatives Design (TAP) Project. **Greenman-Pedersen, Inc. (GPI)** has the optimal blend of comprehensive experience and engineering excellence to navigate your project through to authorization of the construction funding. The staff at GPI is well acquainted with the federal process and has worked with the personnel of the NJDOT Division of Local Aid and Economic Development on numerous occasions to advance projects of all types to the construction phase.

## Description of Services

Based on your needs, we can assist or perform some or all of the activities necessary to develop a bid/authorization package that complies with all applicable state and federal laws, rules and regulations as well as federal, NJDOT and recognized industry design standards (AASHTO, MUTCD, ADA, NJDOT and/or local Complete Streets Policies, etc.).



Some of the applicable services that we can perform for you include:

- Survey and Base Mapping (including LiDAR)
- Traffic Data Collection and Analysis
- Engineering and Design (using either MicroStation or AutoCAD)
- Utility Coordination
- Environmental Documentation/Permitting
- Right-of-Way Documentation
- Design Exception Reports
- Public Outreach / Community Involvement
- PS&E, Construction Schedule and Bid Authorization Packages
- Construction Support

We can also assist you in preparing and/or obtaining:

- Right-of-Way, Utility, Design and Railroad Certifications
- Public Interest Finding (PIF) Statement/Justification for Patented Proprietary Items
- Classification Codes Worksheet for Civil Rights Goal Determination
- Trainee/Apprentice Classifications - DBE/ESBE Training Goals
- Approved Environmental Document (CED and ER) with SHPO Concurrence
- Construction Environmental Checklist

Whether your project involves bicycle and pedestrian lanes, trails and/or facilities, ADA compliant sidewalks and ramps, signing, pavement markings, roadway or decorative lighting, streetscaping, traffic calming, drainage improvements, retaining walls, bridges, and/or traffic signals, GPI has the experience and knowledgeable staff to obtain federal authorization for construction on or ahead of schedule.

## GPI's Approach

We will advance your project by:

1. Understanding your needs and desired outcomes for the project;
2. Working with you and your staff to review the requirements and procedures for advancing your project through the federal aid process;
3. Identifying potential constraints or impacts that could delay the project or make the project cost prohibitive;
4. Utilizing a systematic approach which includes the use of checklists to ensure that the project follows all required procedures, submittals, permits, and approvals to obtain federal authorization.

## Similar Project Experience

### Streetscape and Traffic Calming Improvements

Client: Maplewood Township, Location: Maplewood, NJ

GPI prepared contract documents for streetscape improvements and traffic calming measures to better facilitate pedestrian and vehicular movement. Streetscape work included decorative traffic signal and lighting standards and arms, brick pavers, and other context sensitive solutions.



### NJDOT Local Aid: Multiple Transportation Enhancement (TE) ARRA Funded Projects

Client: NJDOT, Location: Various Municipalities & Counties, NJ

GPI provided professional engineering design services to NJDOT LA District 1 and acted as the Project Manager under direction of the LA District Manager. The purpose was to obtain federal authorization for construction and ensure that all federal ARRA requirements were met for the following distinct projects.



- **Morris Canal Lock 2 East Restoration (Historic Preservation):** Upgraded Morris Canal Lock 2 East to an operational level and create an outdoor museum.
- **City of Clifton - Lakeview Avenue Streetscape:** Streetscape improvements along the business section of Lakeview Avenue consisting of new decorative streetlights, concrete and brick paver sidewalks, textured crosswalks, benches, trash receptacles, shade trees and enhanced signing.
- **William Carlos Williams Community Plaza Beautification (Urban Design):** Beautification and reuse plan at a derelict site located along one of Paterson's main gateways and the Paterson Great Falls Historic District.
- **Totowa Borough - Union Boulevard Streetscape:** Union Boulevard Streetscape Project that included curb and sidewalk improvements, brick paving and decorative lighting.
- **Hopatchung Borough - Hopatchung Road Redevelopment:** Pedestrian circulation network improvements for the Hopatchung Road Redevelopment and Beautification Project including sidewalks, crosswalks, lighting and street furniture.
- **Franklin Township - Asbury Historic District Sidewalk Improvements:** Replaced sidewalks along Old Main Street within the Asbury Historic District.
- **Hackettstown - Main Street Sidewalk and Streetscape:** Improvements that included new sidewalks, tree plantings, decorative lighting, bicycle racks, benches, and trash receptacles.

## JFK Boulevard Traffic Safety / Signal Optimization / Streetscape Improvements

Client: NJTPA/Hudson County, Location: Jersey City, NJ  
GPI developed and designed improvements that make JFK Boulevard safer and friendlier to pedestrians, including the installation of pedestrian bump outs and Lead Pedestrian Intervals (LPis). Improvements also included signal upgrades, signal backplates, crosswalks, countdown pedestrian signals, and ADA compliant sidewalk, ramps and pushbuttons.



## Morristown Engineering and Design of Mobility Improvements

Client: ARUP, Location: Morristown, NJ  
GPI provided planning and engineering services to establish a multimodal transportation plan to improve traffic flow and safety of all users for seven corridors in Morristown. GPI also assisted the town in identifying funding opportunities, such as the Highway Safety Improvement Program (HSIP), Community Development Block Grants (CDBGs) and NJDOT Local Aid grants.



## Somerset County Bikeway

Client: Somerset County Park Commission, Location: Duke Island Park, NJ  
GPI subsidiary Keller & Kirkpatrick designed 2.4 mile-long bike path through Duke Island Park, located on the Raritan River in Raritan Borough and the Township of Bridgewater. The project included multiple State Open Water crossings with bridges and significant permitting.



## West Milford Bikeway Improvements

Client: Township of West Milford, Location: West Milford Township, NJ  
GPI subsidiary Keller & Kirkpatrick designed a bike path extension and roadway improvements to Nosenzo Pond Road. The project was partially funded with a grant from the New Jersey Department of Transportation Local Aid. The total length of the 4 foot-wide bike path on both sides of the road was 1.25 miles.



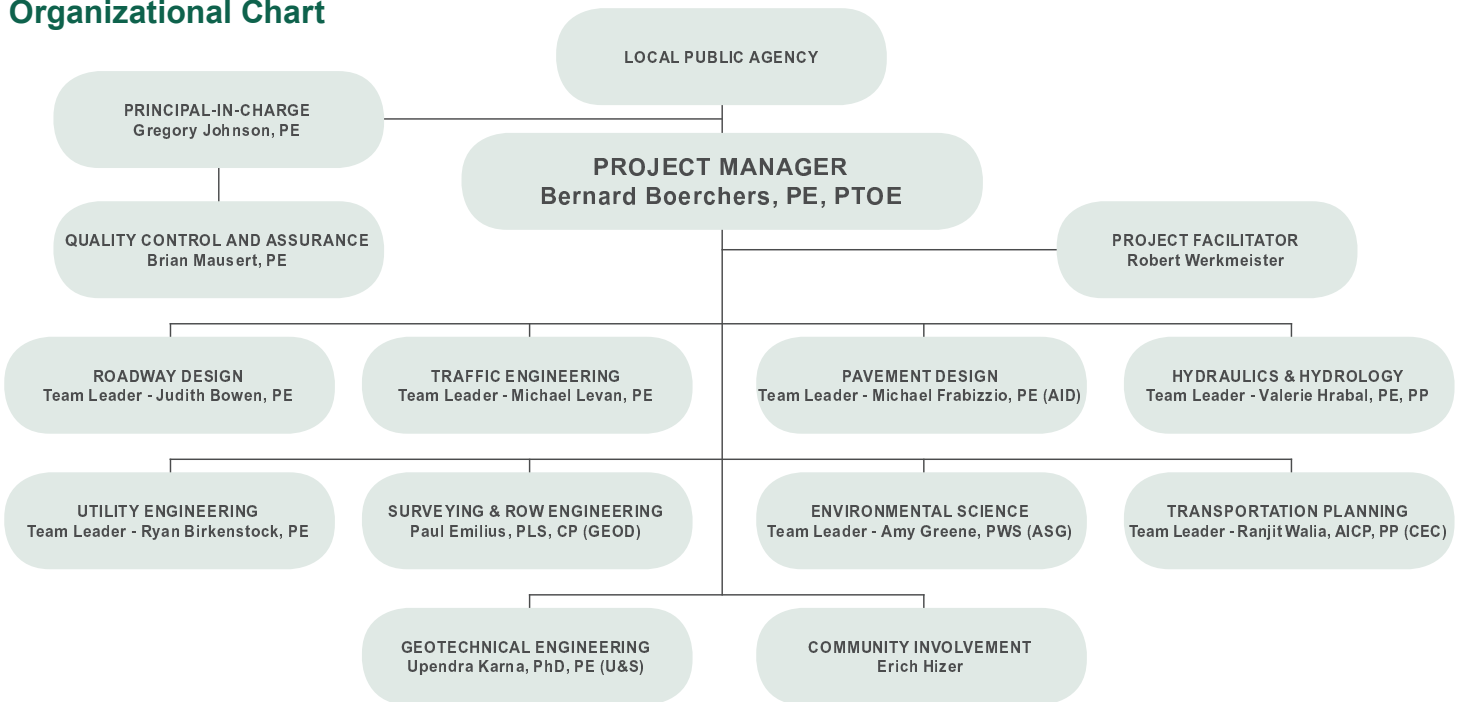
## Bethpage State Park Bikeway Extension

Client: New York State Dept. of Transportation, Location: Nassau County, NY  
GPI designed this shared use path that is approximately 15 miles in length. The path accommodates both bicyclists and pedestrians. GPI developed the project from concept through to PS&E documents, conducted field surveys to augment existing data and assisted the client in coordination with related agencies, municipalities, and special interest groups.





## Organizational Chart



### Subconsultants

(AID) Advanced Infrastructure Design, Inc. (DBE)  
 (ASG) Amy S. Greene Environmental Consultants, Inc. (DBE)  
 (CEC) Civic Eye Collaborative (DBE)  
 (GEOD) GEOD Corporation (ESBE)  
 (U&S) U&S Engineers, PC (DBE)

## GPI's Project Manager

Our proposed Project Manager, Bernie Boerchers, P.E., P.T.O.E. has over 30 years of experience in transportation planning and design in New Jersey. He has managed a wide variety of transportation projects through the local and federal aid processes including a previous on-call agreement with NJDOT Local Aid to provide design support and guidance in the development of several locally sponsored TE ARRA projects. Many of the projects that he has managed have included pedestrian and bicycle facilities and accommodations; ADA compliant sidewalks, ramps and pushbuttons; streetscaping, decorative street lighting, wayfinding signage, trail design, drainage improvements, traffic calming and safety improvements.

As an extra level of quality, GPI's Mr. Robert Werkmeister will perform a thorough review of all contract documents and reports to ensure that they are in full compliance with federal and state requirements. Mr. Werkmeister previously served as the Manager of the NJDOT Central Region's Local Aid Office, and through this experience, he is well versed in the review and coordination of planning, design, and construction and associated federal documents to confirm complete compliance with all applicable regulations.

## Contact

**Bernard Boerchers, P.E., P.T.O.E.**  
**bboerchers@gpinet.com • 908.236.9001**

